



Installing MacBook Pro 15" Retina Display Mid 2012 I/O Board Cable

Written By: Brett Hartt



TOOLS:

- [MacBook Pro and Air 5-Point Pentalobe Screwdriver \(1\)](#)
- [Spudger \(1\)](#)



PARTS:

- [MacBook Pro 15" Retina I/O Board Cable \(1\)](#)

SUMMARY

Input, Output, Sideput. Whatever kind of puting you will be doing, a faulty I/O board cable is going to severely limit the functionality of your MacBook Pro with Retina display. This guide will show you how to replace it.

Step 1 — Lower Case



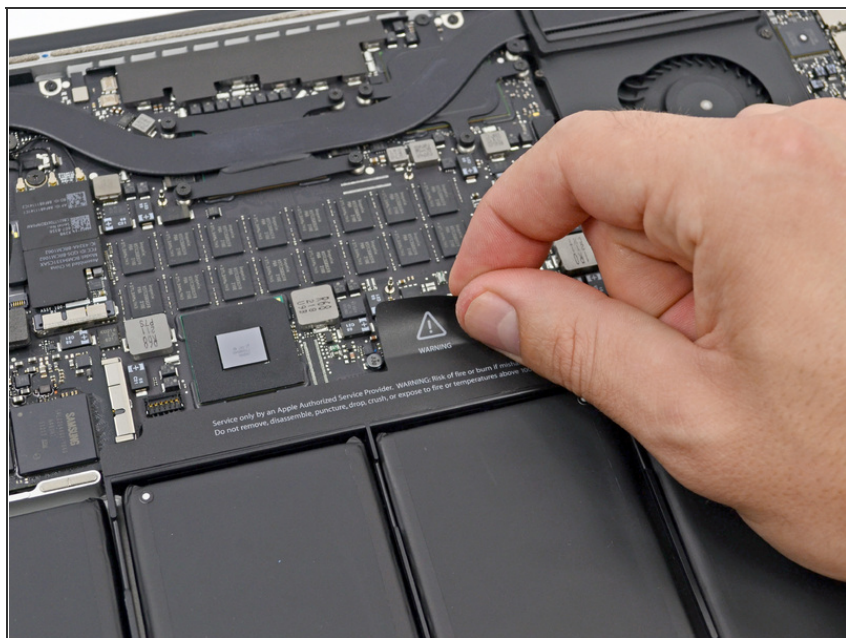
- Remove the following pentalobe screws securing the lower case to the MacBook Pro with Retina display.
 - Eight 3.0 mm
 - Two 2.3 mm

Step 2



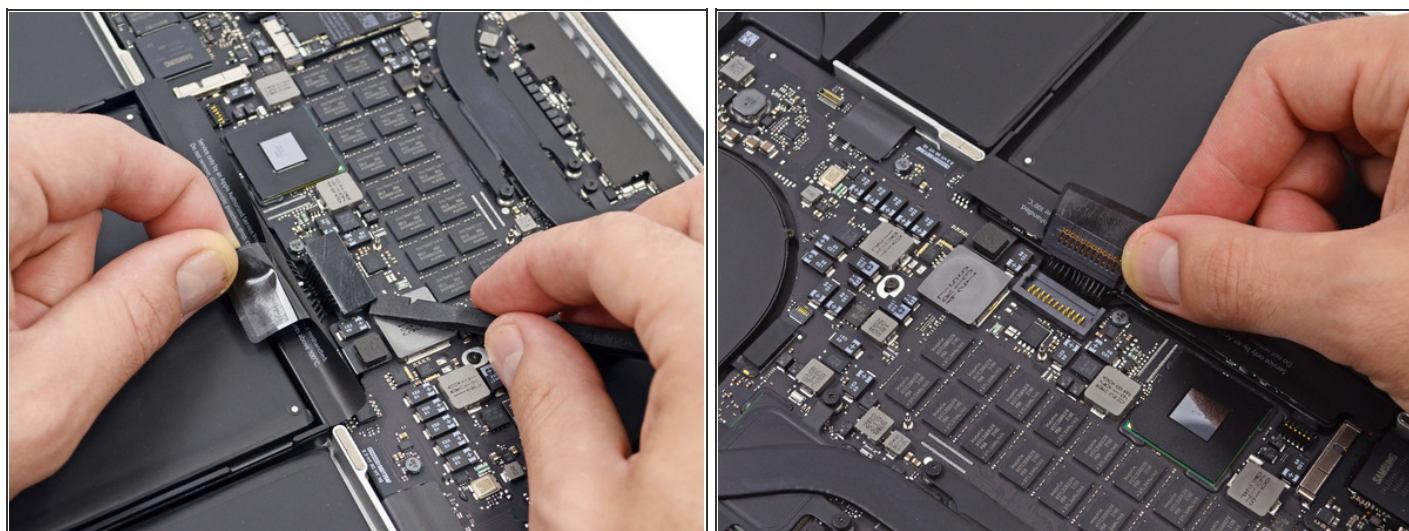
- Lifting from the edge nearest the clutch cover, lift the lower case off the MacBook Pro.
- Set the lower case aside.

Step 3 — Battery Connector



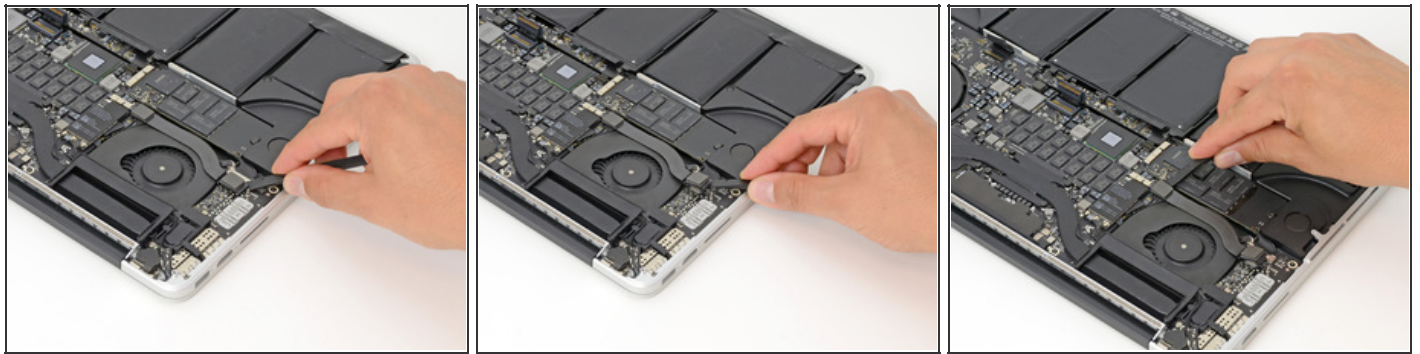
- Peel back the warning label covering the battery connector.

Step 4



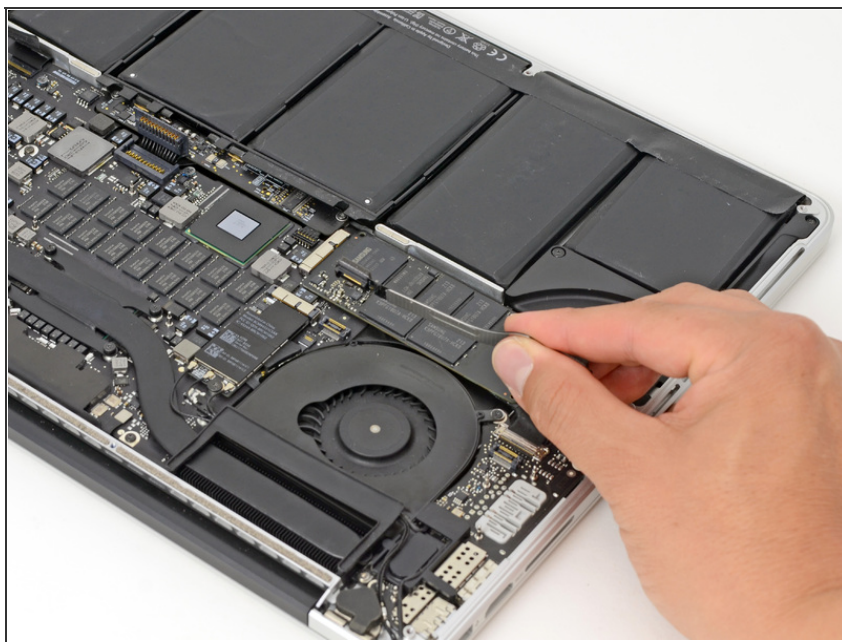
- Using the flat end of a spudger, gently pry the battery connector straight up out of its socket on the logic board.
- Bend the battery cables back and out of the way, ensuring that the battery connector doesn't accidentally make contact with the logic board.

Step 5 — I/O Board Cable



- Using the flat end of a spudger, pry the I/O board cable straight up out of its socket on the I/O board.
- In a similar fashion, remove the I/O board cable from its socket on the I/O board.

Step 6



- Remove the I/O board cable from the MacBook Pro.

To reassemble your device, follow these instructions in reverse order.

This document was last generated on 2012-11-01 04:04:03 AM.